



ARLINGTON GARDEN CLUB

The Perennial

May 2025

Issue 7

ArlingtonGarden.org

m.facebook.com/arlingtongardenclubma

President's Message

Greetings My Fellow Gardeners,

Please come and support our Annual Plant Sale! Jan Ford and Karen MacKinnon, our hard-working Plant Sale organizers, have the following announcements.

Calling all bakers and bakery shoppers. We have run out of baked goods for the past two years and would greatly appreciate your help with baking or purchasing cookies, squares, muffins, breads and family favorites. Please package your items in groups of two, four or six in clear wrap and label all items, especially anything with nuts. Gluten free items are welcome.

Drop off baked goods at the Jason Russell House by 8:15 am on the morning of the Plant Sale.

Search your attic, cellar and shed for the following items in good and usable condition: large and small garden tools, decorative indoor and outdoor pots, china, linens and art with a floral/garden theme, clay pots, tomato cages, fencing for gardens, gardening books, and unique vases.



Bring your items to Carol Nahigian's garage on May 6 and May 8 from 10:00 to 12:00 and 2:00 to 4:00.

Don't forget to label your plants! Labels are available on the Arlington Garden Club website under **Member Resources**.

Plants should be dropped off at the Jason Russell House on Thursday, May 8 or Friday, May 9.

Emily, your President



WEDNESDAY, MAY 21, 2025

Arlington's Tree Committee — Action in a Time of Climate Change

Susan Stamps, Arlington Tree Committee, Town Meeting member

Susan Stamps is a retired attorney, mediator and small business owner who focuses on environmental advocacy, climate resilience and urban forestry. She is a member of Arlington's Tree Committee and Gas Leaks Task Force, Town Meeting member, and a co-founder of Green Streets Arlington which advocates for trees, open spaces, walkability and an ecologically healthy environment in harmony with development in town.

Susan is replacing our previously scheduled May speaker who had to cancel at the last minute. Thanks go to Janet Pagliuca and Jan Still for booking a well known, local presenter who is knowledgeable about our town trees, a topic that is of great interest to all of us.

The meeting begins at 10:30 am at St. John's Church, corner of Pleasant St. and Lombard Rd., Arlington

Reminder: Lunch along with coffee, tea and desserts will be provided by the Hospitality Committee.

From the AGC Archives

Agnes Parise, recording secretary, found an interesting tidbit in old AGC meeting notes. Back in 2019, two apple trees were planted at the Jason Russell House. Both trees have strong connections to Massachusetts. One variety, Roxbury Russet, is generally considered the oldest apple variety cultivated in North America. It was first discovered and named in the mid-17th century in the former Town of Roxbury, Massachusetts, now a neighborhood of Boston. The other variety is Baldwin Apple, which was first discovered in the wild in Wilmington, MA in the 1740s. It was the most popular apple in New England until a series of frost and warm temperatures in 1934 caused many of the trees to explode.



In 2019, Carol Nahigian (L) and Patsy Kraemer planted one of the apple trees.

REPORTS FROM THE COMMITTEES

Garden Outreach

Jackie Keshian and Carol Nahigian, co-chairs

On Thursday, April 24th Charleen Donahue, Mary Hatvany, Jackie Keshian, Barbara Neenan, Janet Pagliuca, and Robin Watkins met with residents of BrightView Senior Living to create beautiful, unique designs from a wide variety of flowers. Everyone enjoyed chatting while arranging the flowers in Mason jars decorated with red, white, and blue ribbon in honor of Patriot's Day.



Nominating Committee

Agnes Parisse, chair



The Nominating Committee presented the following slate of 2025-2026 officers for the Arlington Garden Club. There were no additional nominations from the floor at the April meeting. Voting for the slate will be held at the May membership meeting on May 21, 2025.

- | | |
|---|---------------------------------|
| • President | Emily Snyder |
| • Vice Presidents/Programs | Janet Pagliuca & Jan Still |
| • Treasurer | Nancie Richardson |
| • Vice President, Communications | Peggy Bliss |
| • Recording Secretary | Agnes Parise |
| • Membership Chair | Emily Forshay-Crowley |
| • Hospitality Chairs | Cindy Hamel & Julie McDaniel |
| • Garden Outreach | Jackie Keshian & Carol Nahigian |
| • Environment Chair | Lolly Bennett |
| • Civic Development Chair | Patsy Kraemer |

REPORTS FROM THE COMMITTEES

Environmental Committee

Lolly Bennett, chair

One of the projects proposed by the Environment Committee is to organize walks to environmentally interesting areas near us. Our first one, led by AGC member Andrea Golden, is on Thursday, May 22nd to Arlington's Great Meadows. See "More Events of Interest" for details.



April flower arrangements

Cheryl Brusgulis shared photos of the beautiful arrangements that Kathy Leva, former AGC president, created at our April meeting.



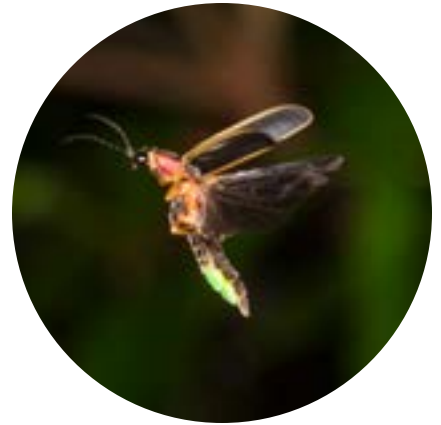
MORE EVENTS OF INTEREST

WEDNESDAY, MAY 14, 7:00 PM

The Wondrous World of Fireflies

Presented by Sara Lewis, a biologist and professor emerita at Tufts University, in conjunction with Grow Native Massachusetts and the New England Botanic Garden at Tower Hill, Boylston

Fireflies are surely among our greatest ambassadors for Earth's natural magic. For centuries their ethereal beauty has sparked wonder and inspired poets, artists, and children of all ages. Yet they hold so many mysteries! Sara Lewis is a biologist who has studied fireflies for the past 30 years, traveling worldwide in her research and advocacy work. She is the author of *Silent Sparks: The Wondrous World of Fireflies*. In person at NEBG or online via Zoom, free [Register here](#)



FRIDAY TO SUNDAY, MAY 16-18, 9 AM - 3 PM

Farmer Scott's Heirloom Tomato Plant Sale

Gore Place, 52 Gore St., Waltham

Vegetable seedlings grown on the Farm at Gore Place. Over 40 varieties of heirloom and hybrid tomatoes, plus peppers, eggplants, herbs and marigolds. [More info here](#)

SATURDAY, MAY 17, 8 - 11 AM

Lexington Field & Garden Club Plant Sale

201 Bedford St., Lexington (front lawn of DPW)

Perennials from member gardens, natives from specialty nurseries, dahlias, LexFarm vegetables and herbs, and Atlas gardening gloves. [More info here](#)

SATURDAY, MAY 17, 9 AM-12 NOON

Belmont Garden Club Perennial Sale

1 Common St., Belmont (lawn of Lions Club)

MORE EVENTS OF INTEREST

WEDNESDAY MAY 21, 12-6 PM

Davis Sq. Farmer's Market:

Native plant pop up sale

44 Day St, Somerville

Grow Native Massachusetts will have a pop-up sale on the first day of the Davis Square Farmer's Market. The pop-up sale will feature native plants sourced from Grow Native Mass network of growers. [More info here](#)



THURSDAY, MAY 22, 10 AM TO 12 NOON

Plants of Arlington's Great Meadows

Andrea Golden, AGC member

Arlington's Great Meadows (AGM), at approximately 183 acres, is Arlington's largest open space. Although it's owned by Arlington, it is located in East Lexington and was originally intended to supplement Arlington's water supply. AGM features meadows, wetlands, and woods with natural communities that are a changing mixture of native, introduced, and invasive plants.

Wear long pants and have bug repellent in reserve. Meet at the end of Emerson Gardens Rd. off Maple St. in Lexington. Some public parking is available just past the entrance to Lexington Meadow townhomes. (Use Emerson Gardens Rd. for overflow parking.) More than light rain cancels.

Andrea Golden andgold2@gmail.com

WEDNESDAY MAY 28, 6-8 PM

Another Season of Drought

Native Plant Trust, online

As we encounter more and more drought and heat, are you wondering which plants will survive? To help us navigate our new normal, Cheryl Salatino will offer some native plants and gardening practices that can require less water—along with ways to evaluate our gardening sites. \$45. [Register here](#)

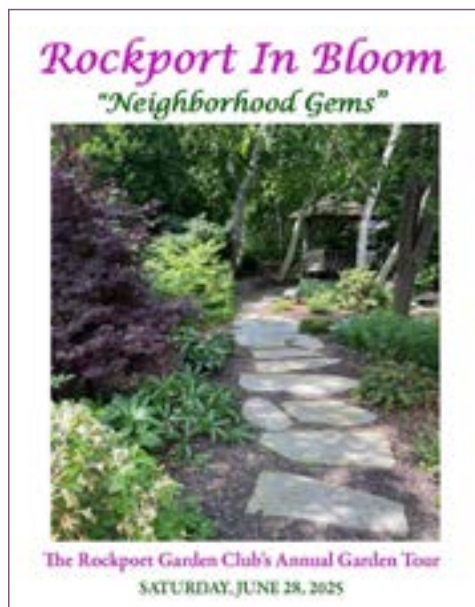
MORE EVENTS OF INTEREST

SATURDAY, MAY 30, 10AM - 4 PM (FRIDAY, MAY 29 FOR MEMBERS ONLY)

Grow Native Massachusetts Annual Native Plant Sale

7 Harrington Rd. Lexington (First Parish Church)

They will have 100+ species, 5000+ plants total. List is published a week or so before the sale. Preregister and sign up for time slot to ease crowding, parking etc. [Register here](#)



SATURDAY, JUNE 28, 10 AM - 4 PM

Rockport Garden Club's Annual Garden Tour "Neighborhood Gems"

Rockport

The Tour features 12 beautiful gardens south of downtown Rockport. \$35 per person. Includes booklets with maps to each location and parking information. Musicians and artists are featured. Visit the [Rockport Garden Club website](#) for more information.

Event listings courtesy of Helen Snively, member, Somerville Garden Club



WEDNESDAY JUNE 19, 2025 | 5:00 PM

End-of-Year Dinner

Arlington Community Center

Make sure you've marked your calendar for our annual garden club dinner. A lovely meal catered by Beaujolais is planned, along with entertainment and a chance to socialize with friends. \$10 will be collected by Nancie Richardson or Julie McDaniel at the May garden club meeting. If you can make the meeting, please be sure to contact Nancie or Julie to get your name on the reservation list.

Would you like to tend to a small rain garden on the edge of beautiful Spy Pond?

The Friends of Spy Pond is seeking a volunteer gardener to take over this site, a swale filled with magnificent native plants. The site was created as part of the large Spy Pond restoration project by Parterre Garden <<https://parterregarden.com/>> about 7 years ago and has been tended by a gardener who is ready to hand it over. With well established plants, the garden pretty much looks after itself, so you will be able to enjoy being at the site, learn more about native plants and tend it at your leisure.

If you are interested, please contact Friends' President Karen Grossman (fspp@friendsofspypondpark.org). I may also be able to answer questions.

~ Emily Snyder (ells.ells0306@gmail.com)

Membership

Emily Forshay-Crowley, Chair

It's that time of year for renewing your membership. To renew, please complete the AGC application form and remit with payment of \$50 made payable to Arlington Garden Club and mail to Membership Chairperson, Emily Forshay-Crowley, 6 Loves Lane, Woburn, MA 01801. An application will be mailed to all members. It can also be found on the **AGC website**.