

The Perennial



2015-2016

Issue 1: September

Website:

ArlingtonGarden.org

Welcome to our 84th year!

Once again the Program Chairs have planned some wonderful programs that will both inform and engage us this year, beginning with an outstanding program on invasives last week. Be sure to check your yearbook for the new programming dates during the winter months.

An important change to note: Evening meetings will have a new venue at the Central School/ Senior Center, 2nd floor Art Room, 27 Maple St. Arlington.

Upcoming Programs:

Evening Meeting – September 24

Senior Center (see above) 7:00pm

Orchids Made Simple – Paul Steen, Lifetime Master Gardener – Paul will share the basics of this fascinating garden specialty as well as covering the six easiest orchids to grow and their care. Handouts will be included.



Daytime Meeting –October 14

St. John's Episcopal Church – 10:30

Problems with Lyme Disease and Other Tick-Borne

Diseases – Sandy Bonzagni, a member of the Acton Garden Club who was hospitalized after contracting Lyme Disease. She has become an advocate for education and will focus on the difficulty in diagnosing the diseases and the controversy surrounding their treatment. An important topic as the tick population is on the rise.



Books in Bloom Friday, November 6th 7:00-9:00 pm

This important fund-raiser needs volunteers for the following tasks:

*At least four *flower arrangers*. Please contact Patsy Kraemer (patsy@patsykraemer.com or 781 646-4645)

**Bakers* for small fancy desserts (no brownies please). Please contact Carol Nahigian 781 648-6219

*Members to buy & sell tickets and help publicize the event

*Members to help set out food, tend tables, help with clean-up

*Loans of tiered and pedestal plates for staging desserts

Please consider where you can help out to ensure a most successful event!



Web Master Needed

After several years of managing our website, Juliette Avots is retiring. She has left the site in great shape to start the year but we need a volunteer to update the site as needed. One suggestion has been to look within our families and friends for a responsible tech savvy teen who could earn community service points for maintaining the site.

Civic Development: Jane Foley, Chair

It has been a busy summer for all our volunteers. These are the updates on our current projects:

A New Undertaking: The garden club has adopted the planters in the Heights near Swifty Printing and will need volunteers this fall to pull out the old plants and prepare the sites for spring planting.

Whittemore Robbins House: The garden has undergone a huge transformation with all the sensitive fern removed and native shrubs planted along the side of the building. Lilacs are pruned and new lace cap hydrangeas continue to enhance the garden. Removal of invasives continues and this fall hostas will be thinned out in front. Many thanks to all the volunteers and Master Gardeners who have lent a hand. If you would like to help out, please contact Jan Ford.

Beautification: It was a difficult year for all the “islanders” as they struggled to keep ahead of the weeds and watering. The Committee decided to forgo the judging and instead sent out appreciation notes to all the volunteer gardeners, business connections and potential supporters of the Club. Each member has received a copy of the thank you note that was sent out this week. With the new development of East Arlington sidewalks and island areas, it is always helpful to have more volunteers support this endeavor. To this end, the Chamber of Commerce offered to place a request in the Fall Newsletter hoping more business leaders will either take on islands or help out financially.

Broadway Plaza: The Plaza has had a major “redo” as 2 planters were completely replaced including all the soil and plantings. With help from Sally Naish, the 2 planters now look beautiful in front of Starbucks and the Madrona Tree businesses. Two businesses in the Plaza have made donations to the Garden Club for these projects, Watertown Savings, and Ron Reisz, Optician. Please thank them if you have the opportunity. This defrays the cost of weekly watering. The town has redesigned part of the Plaza area for more outdoor seating. The volunteers have found it a bit more difficult to access the area due to fewer parking spaces and more obstacles, including heavy traffic areas, trash and outdoor seating. More volunteers for this area are needed for weeding, feeding and pruning. If you can help, see Janet Pagliuca.

Jason Russell House: This year, the Jason Russell House Garden Committee has been making plans for a new historic garden targeted for Spring 2016. This garden is hopefully going to replicate what Mrs. Russell might have grown outside her kitchen. The committee has been learning about kitchen gardens and visited several historic gardens in the area. This fall, the beds will be moved away from the foundation to maximize sun exposure and garden space. The new “teaching” garden will help the school children and the public appreciate the practical nature of plantings in the colonial era. If you are interested in helping plan, plant and maintain, contact Juliette Avots or Carol Nahigian.

Spy Pond Rain Garden: The Spy Pond Garden’s purpose is two-fold: (1) to showcase native , drought tolerant plants which can filter storm water runoff and (2) to minimize water overflow onto non-porous surfaces. With a small grant to the Garden Club the garden beautifully blooms for 3 seasons of the year. In May, the Garden Club members rebuilt the stone pathway that had become overrun with weeds. Although many of the original plants are thriving, some replacements have been made and this fall, the volunteers will revisit problem areas, building up eroded soil and adding new native perennials to join the happy survivors!

Town Gardens: The Town Garden volunteers have been very busy over the summer with over 20 days cleaning and clearing. The gardens are looking really beautiful. Work days will continue into the fall. Everyone is welcome to come help whenever work days are scheduled! Work days are found on emails from Patsy Kramer. Many thanks to all the Master Gardeners that lent a hand. Friends of the Robbins Town Gardens is now an official nonprofit organization that is also supporting our beautiful Town Gardens. We appreciate all that value this beautiful park area!

Environmental Corner Mary Stack, Chair

The Arlington DPW in coordination with Bootstraps Compost has started a program to collect kitchen waste at the Farmers Market on Wednesdays through the end of October. You can bring anything that can be composted to the Bootstrap bins from 2:00 to 5:00 pm.

Bootstrap Compost also offers curbside kitchen waste collection for a fee. You can leave your scraps out weekly or biweekly. In return you receive finished compost three times a year.

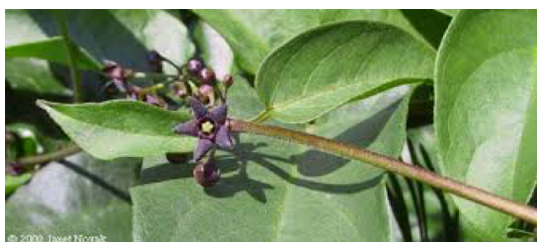
These are two great alternatives for people who don't have the time or space for backyard composting.

For more details use the following link:

<http://www.arlingtonma.gov/home/showdocument?id=26235>

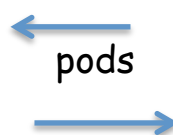
Invasive Alert

This year has proved to be a very difficult year for monarchs. Black swallowwort is on the rise and milkweed is decreasing. Although swallowwort is related to milkweed, if the butterflies lay their eggs on the leaves the caterpillars will not feed on them and will die. This is the time of the year when the plant is producing seed pods. If you see the pods collect them, and then pull out the plant. Place both plant and pods in a heavy black plastic bag to be disposed of with your trash, never composted. It will require several attempts to eradicate this plant.



Black Swallowwort
Cynanchum louiseae

Flowers



Native Alternatives:



Common Milkweed
Asclepias syriaca



Butterfly Weed
Asclepias tuberosa

Members Corner:

I asked two of our members what did they enjoy the most about the Garden Club and these were their answers:

“The revitalization of the Garden Club,” Carol

“The opportunity to meet people with the same interests and learning more about gardening,” Nancy

What do you like about being a member of the Club?



This bee is enjoying the benefit of the hard work of volunteers at the Whittemore Robbins House garden as it sips nectar and gathers pollen.